



An old problem in installing proximity switches has now been solved. Balluff **clamps with positive stop** ensure the exact and correct position of the proximity switch.

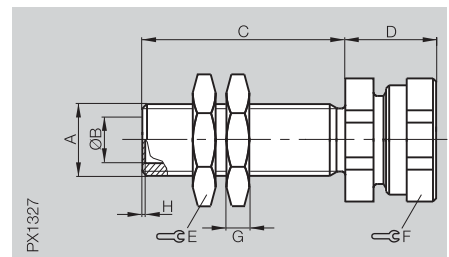
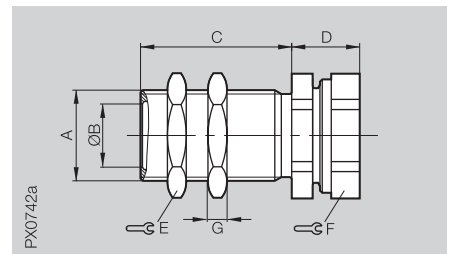
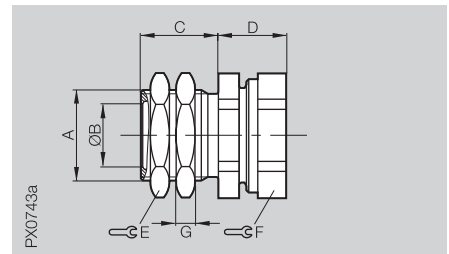
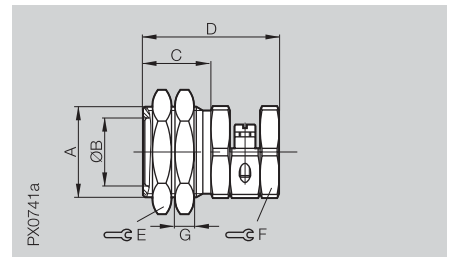
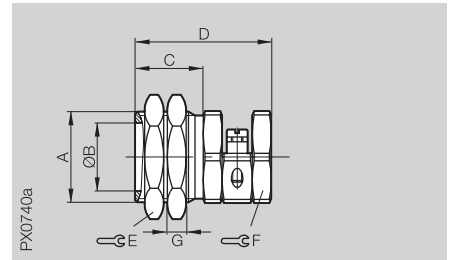
Proximity switches can be quickly and easily changed even in difficult to access locations, and retain their sensing position without readjustment thanks to a positive stop.

**Advantages**

- Short downtimes
- Quickly replaced
- Once set, always in the right position
- No readjustment
- Easy installation and changing of proximity switches thanks to the positive stop
- Easy to attach the sensor using a compression screw

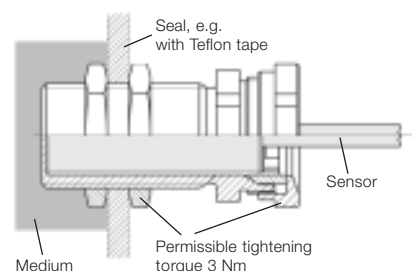
**Note for clamps with positive stop made of metal**

The switching distance of the proximity switch may be reduced by use of these brackets. Note this when using this clamping system.



**Installation example clamp BES ...-KH-3L**

especially suitable for sensing in liquid media



**Clamps without positive stop for sensors (material: nickel plated brass)**

	A	ØB	C	D	E	F	G
BES 12,0-KH-4	M16×1	12	16	30.5	22	17	3.9
BES 18,0-KH-4	M24×1.5	18	18	36	30	24	5.0
BES 30,0-KH-4	M36×1.5	30	18	40	41	41	5.9

**Clamps with positive stop for sensors (material: nickel plated brass)**

	A	ØB	C	D	E	F	G
BES 08,0-KH-4-F	M12×1	8	15.4	30	17	17	3.8
BES 12,0-KH-4-F	M16×1	12	16	30.5	20	17	3.9
BES 18,0-KH-4-F	M24×1.5	18	18	36	30	24	5.0
BES 30,0-KH-4-F	M36×1.5	30	18	40	41	41	5.9

**Clamps with positive stop for sensors with thread length ≥ 30 mm (material: nickel plated brass, except: M8×1 material: stainless steel)**

	A	ØB	C	D max.	E	F	G
BES 05,0-KH-2S	M8×1	5	13	11	13	13	4
BES 08,0-KH-2S*	M12×1	8	17.5	14.5	17	17	4
BES 12,0-KH-2S*	M16×1	12	19.5	14.5	22	22	4
BES 18,0-KH-2S*	M24×1.5	18	20.5	15.5	30	30	5
BES 30,0-KH-2S*	M36×1.5	30	20.5	15.5	41	41	6

**Clamps with positive stop for sensors with thread length ≥ L (material: nickel plated brass)**

	A	ØB	C	D max.	E	F	G
BES 08,0-KH-2L*	M12×1	8	34	14.5	17	17	4
BES 12,0-KH-2L*	M16×1	12	30	14.5	22	22	4
BES 18,0-KH-2L*	M24×1.5	18	40	18	30	30	5
BES 30,0-KH-2L*	M36×1.5	30	40	18	41	41	6

**Clamps with positive stop for sensors in sealed installation (material: PBT fiberglass reinforced)**

	A	ØB	C	D max.	E	F	G
BES 08,0-KH-3L	M12×1	8	34	14.5	17	17	4
BES 12,0-KH-3L	M16×1	12	30	14.5	22	22	4
BES 18,0-KH-3L	M24×1.5	18	40	19.5	30	30	5

\*Also available for welding machines (teflonized).

Ordering example (weld-immune):  
BES 12,0-KH-2L/W

