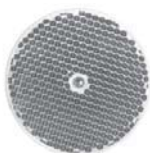


In demand are holding systems that can be used for a variety of widely disparate sensor applications. Balluff see themselves as a systems provider, and has not only sensors but also a correspondingly high-quality range of mounting accessories in their lineup for optimally positioning sensors in equipment and machines. The Balluff Mounting System can be attached on base plates and on all commonly used rails. The variable accessories kit enables virtually every required spatial angle to be covered. Compatible with tubular and block style sensors, additional accessories such as reflector holders or adapter plates round out the accessories kit.

Description	<b>Base holder</b>	<b>Articulated base holder</b>
Version	for 1 rod Ø 12 mm or 10x10 mm	for 1 rod Ø 12 mm
Application	for mounting on base plates or extrusions	for mounting on base plates or extrusions
Ordering code	BMS CU-P-D12-A040-00	BMS CUJ-P-D12-R040-00
Material	Plastic POM	Plastic POM

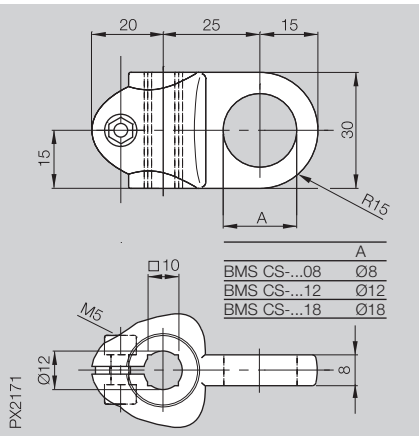


Mounting rods Ø 12 mm, anodized aluminum,  
see page **5.56**



### Sensor holder

for 1 rod  $\varnothing$  12 mm or 10x10 mm  
for tubular sensors M8, M12, M18

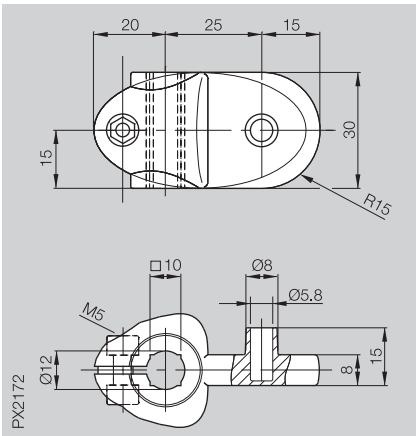


BMS CS-P-D12-AD08-00  
BMS CS-P-D12-AD12-00  
BMS CS-P-D12-AD18-00

Plastic POM

### Reflector holder

for 1 rod  $\varnothing$  12 mm or 10x10 mm  
for all reflectors with  $\varnothing$  20 mm (glue attachment) and BOS R-14  $\varnothing$  51 mm (plug-in)

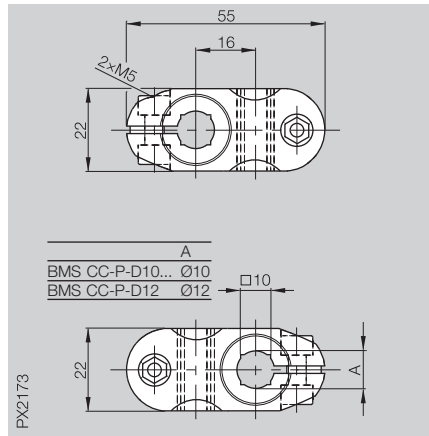


BMS CR-P-D12-AU-00

Plastic POM

### Cross-connector

for 2 rods  $\varnothing$  10/12 mm or 10x10 mm  
Connecting element for 2 rods  
 $\varnothing$  10/12 mm or 10x10 mm



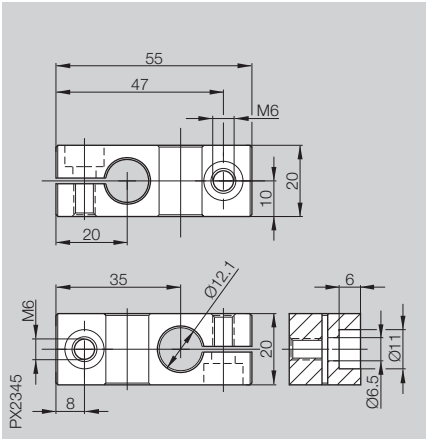
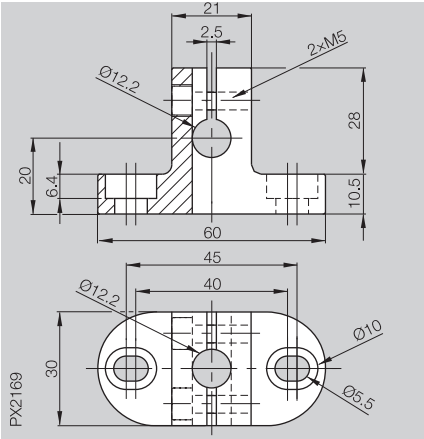
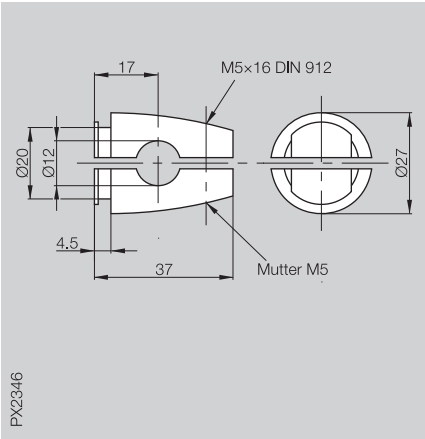
BMS CC-P-D10-A-00  
BMS CC-P-D12-A-00

Plastic POM



5

Connectors  
Splitter boxes  
with accessories  
Electrical  
devices  
**Fasteners**  
Tools

Description	Cross-connector	Base holder	Clamping cylinder
Version	for 2 rods Ø 12 mm	for 1 rod Ø 12 mm (vertical or horizontal)	
Application	Connecting element for 2 rods Ø 12 mm	for mounting on base plates or extrusions	Accommodates all holders, sensors and reflectors
			
Ordering code	BMS CC-M-D12-B-00*	BMS CU-M-D12-A040-00	BMS CS-M-D12-IZ
Material	Anodized aluminum	Anodized aluminum	GD-Zn

\*Screws are included.

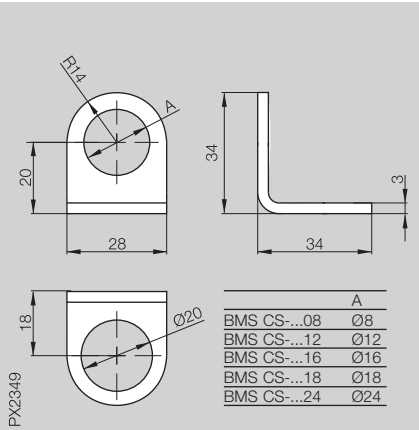


Mounting rods Ø 12 mm, anodized aluminum, see page 5.56



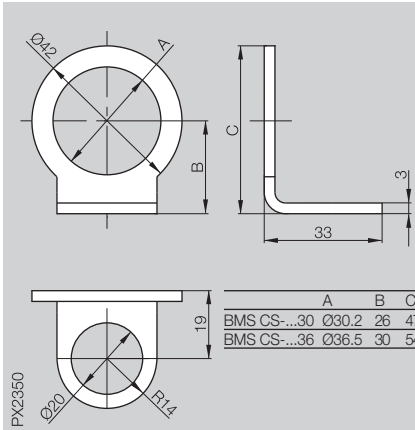
### Sensor holder

for clamping cylinder  
for M8, M12, M18 tubular sensors as well  
as all M8...M18 clamps



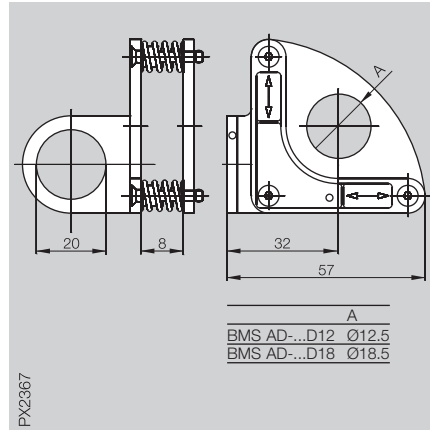
### Sensor holder

for clamping cylinders  
for M30, M36 tubular sensors as well  
as all M36 clamps



### Adjusting unit

for clamping cylinders  
for adjusting M12 and M18 laser sensors



BMS CS-M-D12-ID08-01  
BMS CS-M-D12-ID12-01  
BMS CS-M-D12-ID16-01  
BMS CS-M-D12-ID18-01  
BMS CS-M-D12-ID24-01

Stainless steel

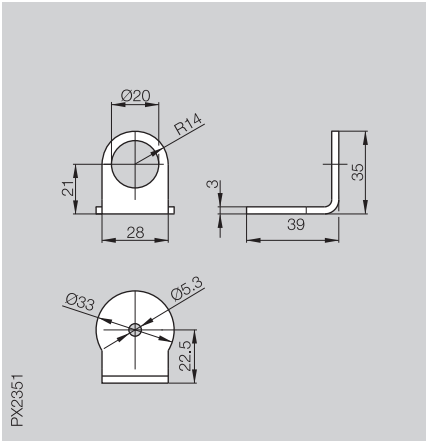
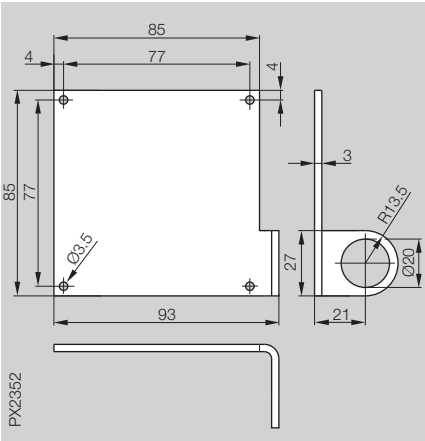
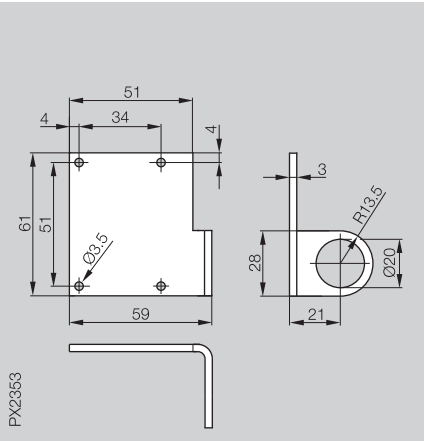
BMS CS-M-D12-ID30-01  
BMS CS-M-D12-ID36-01

Stainless steel

BMS AD-M-002-D12/D12  
BMS AD-M-002-D12/D18

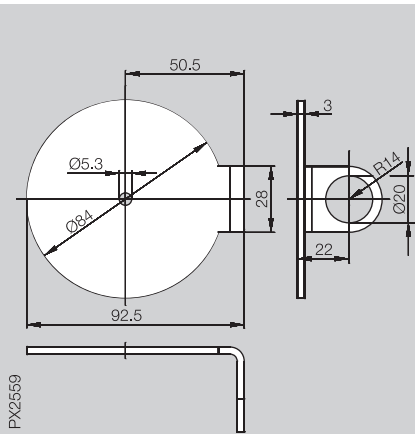
Stainless steel



Description	Reflector holder	Reflector holder	Reflector holder
Version	for BOS R1 + R2 + R3	for BOS R11	for BOS R9
Application	for clamping cylinder	for clamping cylinder	for clamping cylinder
			
Ordering code	BMS CR-M-D12-IU-02	BMS CR-M-D12-IS-03	BMS CR-M-D12-IS-04
Material	Stainless steel	Stainless steel	Stainless steel



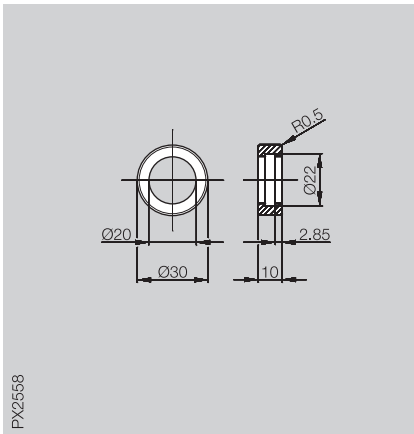
**Reflector holder**  
for BOS R1  
for clamping cylinder



BMS CR-M-D12-IU-05

Stainless steel

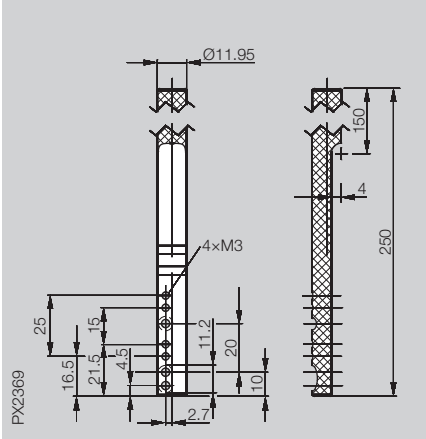
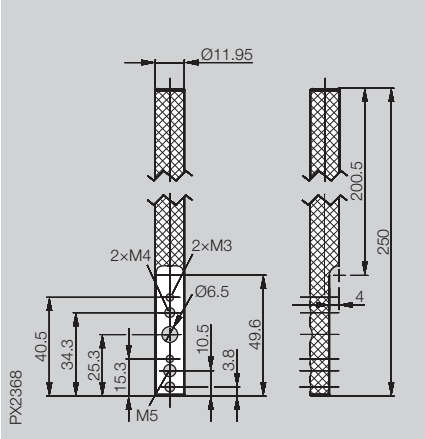
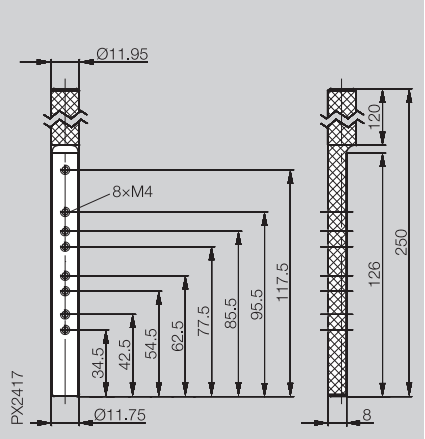
**Adapter ring**  
for 2× BMS CS-M-D12-IZ  
for clamping cylinder



BMS AD-M-003-D12/IZ

Anodized Al



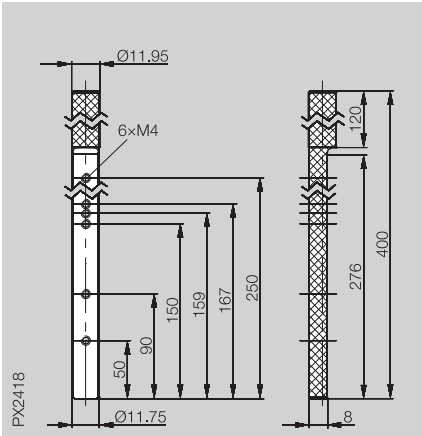
Description	Sensor holder	Reflector holder	Sensor holder
Version	for BOS 2K, BOS 5K, BOS 6K, BES/BOS Q08	for reflectors R1, R9, R14, R22, R26	for slot sensors BGL 5A, 10A, 20A, 30A, 50A, 80A
Application	for base holder Ø 12 mm	for base holder Ø 12 mm	for base holder with/without cross-connector
			
Ordering code	BMS BS-M-D12-0250-02	BMS BS-M-D12-0250-01	BMS BS-M-D12-0250-03
Material	Anodized aluminum	Anodized aluminum	Anodized Al





**Sensor holder**

for slot sensors BGL 80A, 120A, 180A, 220A  
for base holder with/without  
cross-connector

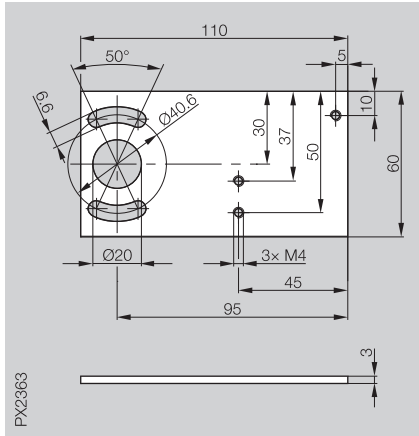


BMS BS-M-D12-0400-04

Anodized Al

**Sensor adapter plate**

for BOS 21/25/26  
for base holder with hold spacing 40 mm  
and clamping cylinders

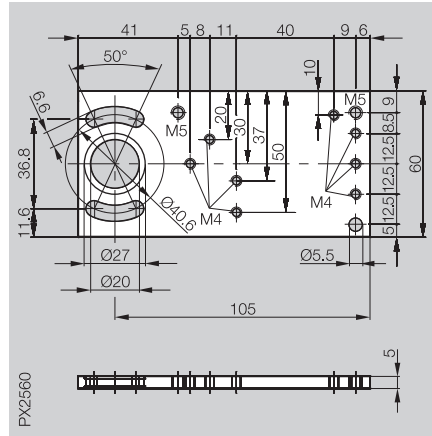


BMS CS-M-D12-BX01-01

Anodized aluminum

**Sensor adapter plate**

for BOS 21/25/26, BOD 63/66  
for base holder with hole spacing 40 mm  
and clamping cylinders

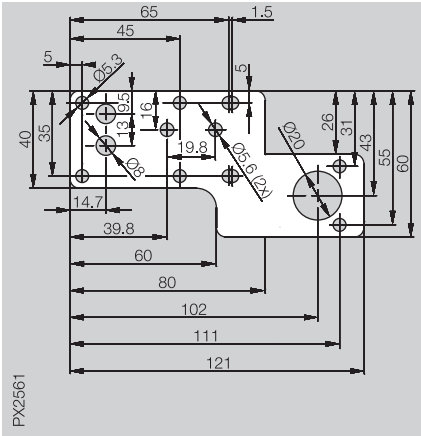
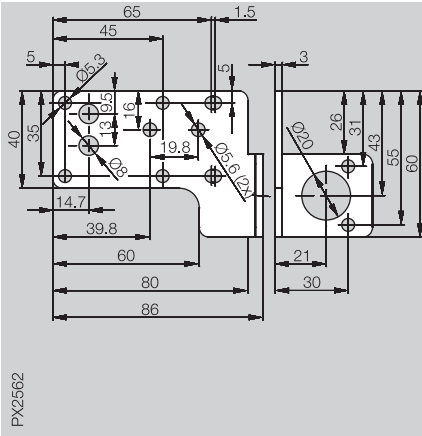


BMS CS-M-D12-BX05-02

Anodized Al





Description	Sensor holder	Sensor holder	
Version	straight	angled	
Application	Sensor holder for Unicompat, Unisensor, BES IKU	Sensor holder for Unicompat, Unisensor, BES IKU	
			
Ordering code	BMS CS-M-D12-IQ40-03	BMS CS-M-D12-IQ40-02	
Material	Stainless steel	Stainless steel	



When installing sensors on machines and systems, quick solutions are often required for positioning the sensors. Installers need finished, compatible solutions for service work.

For such work, Balluff offers the BMS Kit-V1 an. From the base holder to rods and cross-connectors to the most commonly needed sensor holders, everything you need for establishing a secure sensor position is included in the Mounting Kit. Once parts have been used, an order form is included for simple reordering.

The tough aluminum case with additional, variable compartments is designed for tough industrial use.

Ordering code:  
**BMS Kit-V1**

Item	Case contents Quantity	Description	Ordering code
1. 	20	Base holder	BMS CU-M-D12-A040-00
2. 	10	Cross-connector	BMS CC-M-D12-B-00
3. 	20	Clamping cylinder	BMS CS-M-D12-IZ
4. 	5	Sensor holder for M8	BMS CS-M-D12-ID08-01
5. 	10	Sensor holder for M12	BMS CS-M-D12-ID12-01
6. 	10	Sensor holder for M16	BMS CS-M-D12-ID16-01
7. 	10	Sensor holder for M18	BMS CS-M-D12-ID18-01
8. 	10	Sensor holder for M24	BMS CS-M-D12-ID24-01
9. 	5	Sensor holder for M30	BMS CS-M-D12-ID30-01
10. 	5	Sensor holder for Q40 straight	BMS CS-M-D12-IQ40-03
11. 	5	Sensor adapter plate for BOS 21/25/26	BMS CS-M-D12-BX01-01
12. 	5	Reflector holder for BOS R-9	BMS CR-M-D12-IS-04
13. 	5	Reflector holder for R1, R9, R14, R22, R26	BMS BS-M-D12-0250-01
14. 	5	Reflector BOS R-9	BOS R-9
15. 	10	Mounting rod 150 mm	BMS RS-M-D12-0150-00
16. 	10	Mounting rod 250 mm	BMS RS-M-D12-0250-00

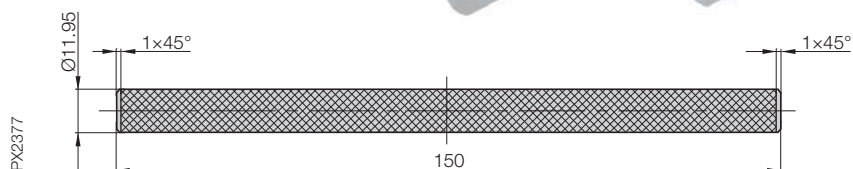


**Mounting rods Ø 12 mm**, anodized aluminum,

BMS RS-M-D12-**0150**-00 = 150 mm

BMS RS-M-D12-**0250**-00 = 250 mm

BMS RS-M-D12-**1000**-00 = 1000 mm  
(for user assembly)



The mounting rods are knurled full-length. This prevents any position change.





**5**

Connectors  
Splitter boxes  
with  
accessories  
Electrical  
devices  
**Fasteners**  
Tools