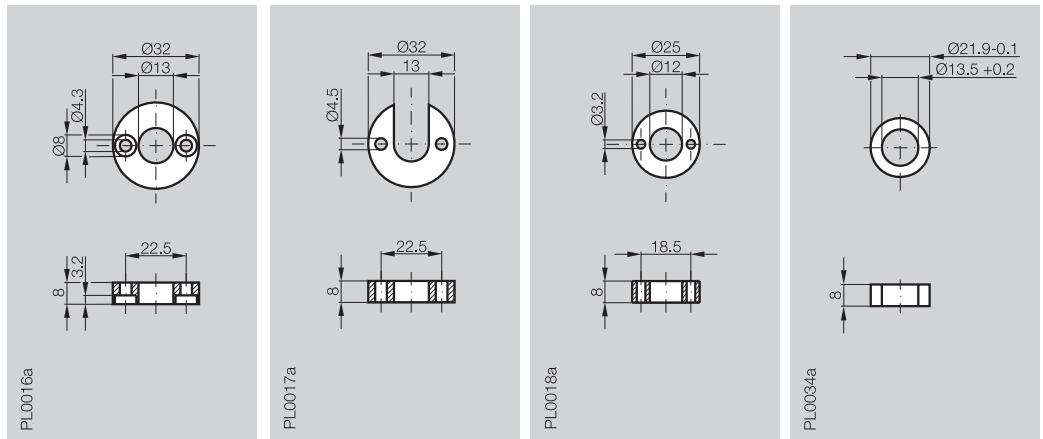
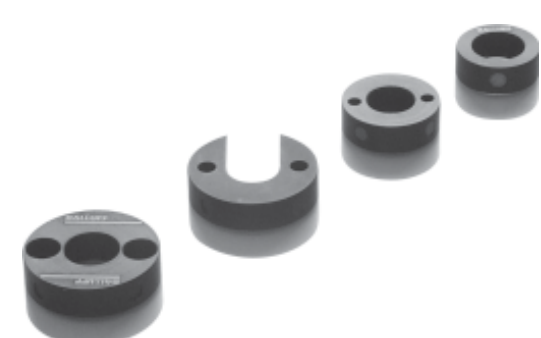


Description for series	<b>Magnet</b> BTL5 Rod	<b>Magnet</b> BTL5 Rod	<b>Magnet</b> BTL5 Rod	<b>Magnet</b> BTL5 Rod
------------------------	---------------------------	---------------------------	---------------------------	---------------------------



Ordering code	BTL-P-1013-4R	BTL-P-1013-4S	BTL-P-1012-4R	BTL-P-1014-2R
Material	Al	Al	Al	Al
Weight	approx. 12 g	approx. 12 g	approx. 12 g	approx. 10 g
Magnet traverse velocity	any	any	any	any
Operating temperature/Storage temperature	-40...+100 °C	-40...+100 °C	-40...+100 °C	-40...+100 °C
Ordering code PA 60 glass fiber reinforced	BTL-P-1013-4R-PA		BTL-P-1012-4R-PA	
Material	PA 60 glass fiber reinforced		PA 60 glass fiber reinforced	
Weight	approx. 10 g		approx. 10 g	
Magnet traverse velocity	any		any	
Operating temperature/Storage temperature	-40...+100 °C		-40...+100 °C	

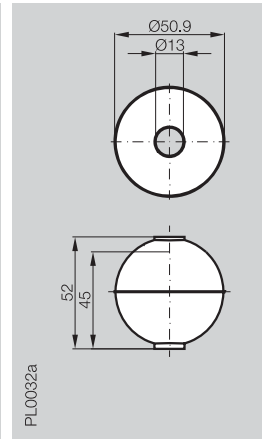
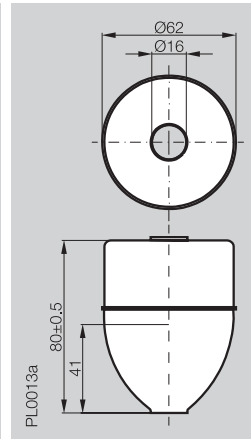
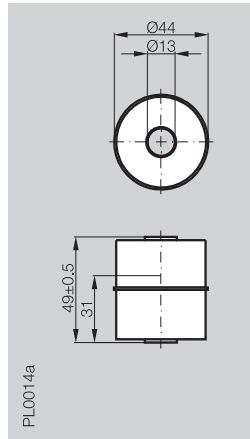
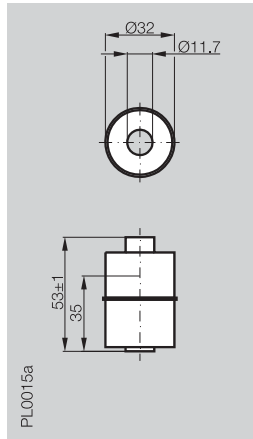


M18×1.5 mounting nut  
Order designation:  
BTL-A-FK01-E-M18×1.5

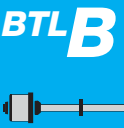
3/4"-16 UNF mounting nut  
Order designation:  
BTL-A-FK01-E-3/4"-16 UNF



Description for series	<b>Float</b> BTL5 Rod	<b>Float</b> BTL5 Rod	<b>Float</b> BTL5 Rod	<b>Float</b> BTL5 Rod
------------------------	--------------------------	--------------------------	--------------------------	--------------------------



Ordering code	BTL2-S-3212-4Z	BTL2-S-4414-4Z	BTL2-S-6216-8P	BTL2-S-5113-4K
Material	Stainless 1.4571	Stainless 1.4571	Stainless 1.4541	Stainless 1.4571
Weight	approx. 20 g	approx. 30 g	approx. 66 g	approx. 34 g
Operating/Storage temperature	-40...+120 °C	-40...+120 °C	-40...+120 °C	-40...+120 °C
Displacement in water	approx. 35 mm	approx. 31 mm	approx. 41 mm	approx. 45 mm
Pressure resistance (static)	24 bar	20 bar	15 bar	40 bar



- General data
- Analog interface
- Digital pulse interface
- SSI-interface
- CANopen interface
- PROFIBUS-DP interface
- Position recognition in the hydraulics
- Magnets and floats**
- Installation notes
- Special series

